

IT

Nuove soluzioni hanno permesso la realizzazione di una gamma di pensili completa. Sono previste versioni a giorno, con porte scorrevoli, con gocciolatoio, con scolapiatti e ad angolo. I pensili con altezza 67 cm. sono dotati di un ripiano regolabile, quelli da 90 cm. sono forniti con due ripiani, anch'essi regolabili.

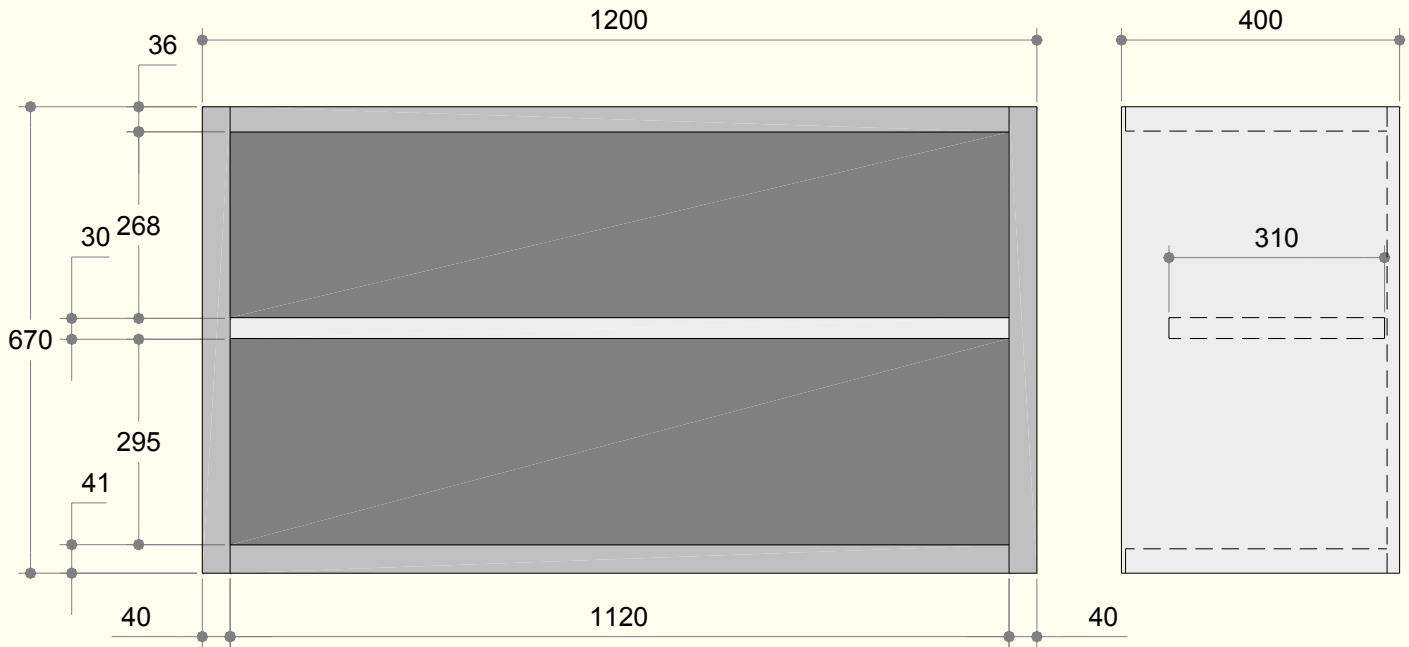
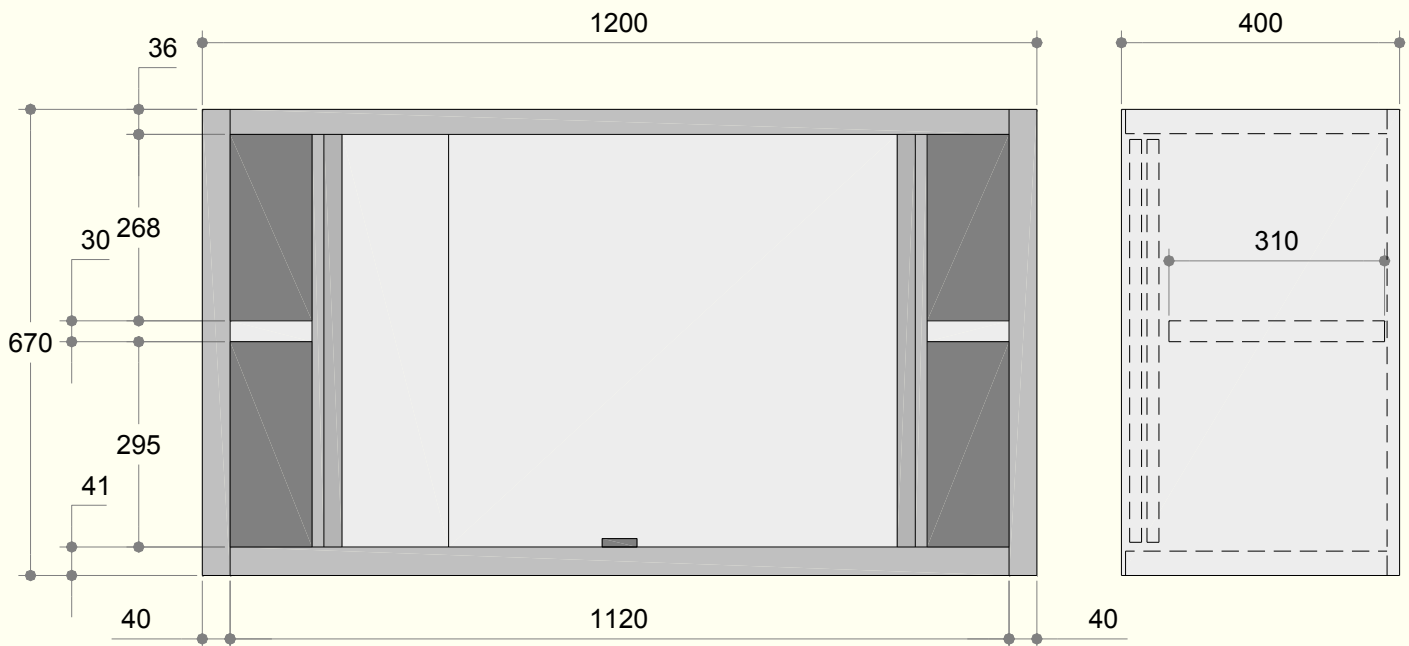
New solutions have allowed the realization of a range of complete wall units. There are open versions, with sliding doors, with drip-catcher, with dish drainer and with corner installation. The wall units with a height of 67 cm are equipped with an adjustable shelf, and those with a height of 90 cm are equipped with two shelves which are also adjustable.

EN**FR**

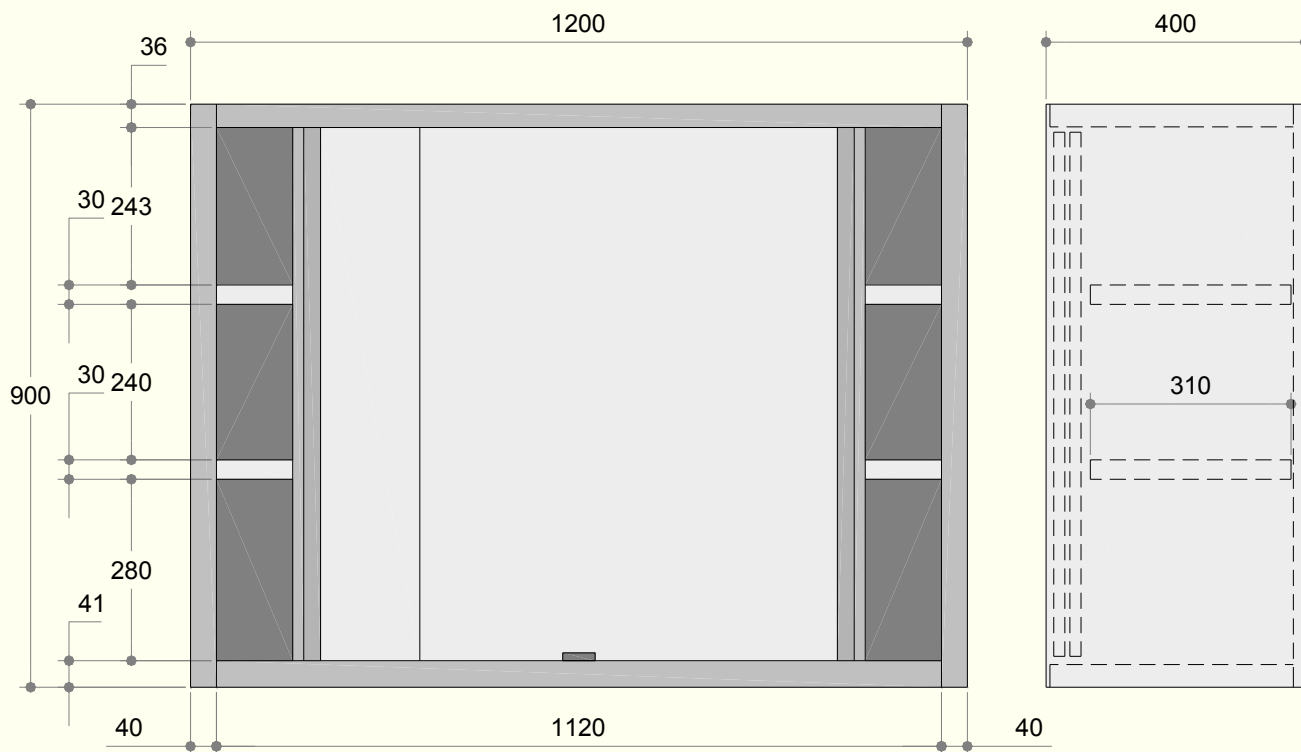
De nouvelles solutions ont permis la réalisation d'une gamme complète d'armoires suspendues. On a prévu des versions ouvertes et avec portes coulissantes, avec égouttoir et aussi des éléments d'angle. Les armoires suspendues d'une hauteur de 67 cm, sont équipées d'une étagère intermédiaire réglable, tandis que celles de 90 cm. de hauteur sont fournies avec deux étagères intermédiaires réglables.

Neue Lösungen haben die Herstellung einer vollständigen Hängeschranklinie ermöglicht. Es sind offene Versionen und Eckschränke vorgesehen, die Elemente können mit Schiebetüren, Tropfenschale und Geschirrabtropfgestell ausgestattet werden. Die Hängeschränke mit Höhe 67 cm sind mit einem höhenverstellbaren Zwischenboden, die Hängeschränke mit Höhe 90 cm mit zwei höhenverstellbaren Zwischenböden ausgerüstet.

DE

PPSN0005

PPSN0018


PPSN0031

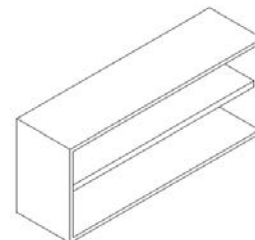




Pensili a Giorno

Open Hanging Units

Armoires Murales Ouvertes

Offene Wandhangeschranke



| Modello - Model Model - Gerätetyp |  Dimensioni esterne - External Dimension Dimensions externes - ußenabmessungen | H=67 | | | |
|---|---|--|---|---|---|
|  | Materiale Material Matériau Verstoff | Lunghezza Width Largeur Breite | Profondità Depth Profondeur Tiefe | Altezza Height Hauteur Höhe | Peso Netto Net weight Poids net Netto Gewicht |
| | | mm | mm | mm | kg |
| PPSN0001 | 304 | L=800 | 400 | 670 | |
| PPSN0002 | | L=900 | | | |
| PPSN0003 | | L=1000 | | | |
| PPSN0004 | | L=1100 | | | |
| PPSN0005 | | L=1200 | | | |
| PPSN0006 | | L=1300 | | | |
| PPSN0007 | | L=1400 | | | |
| PPSN0008 | | L=1500 | | | |
| PPSN0009 | | L=1600 | | | |
| PPSN0010 | | L=1700 | | | |
| PPSN0011 | | L=1800 | | | |
| PPSN0012 | | L=1900 | | | |
| PPSN0013 | | L=2000 | | | |

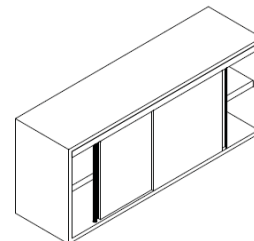
1 Ripiano Regolabile - 1 Adjustable Shelf
1 Etagere Reglable - 1 Regelbare Zwischenfläche


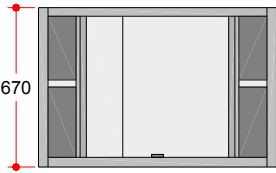
Pensili Porte Scorrevoli

Hanging Units with Sliding Doors

Armoires Murales avec portes a Coulissantes

Wandhangeschranke mit Schiebeturen



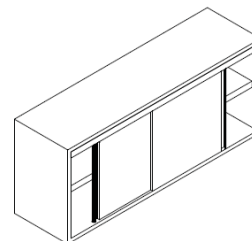
| Modello - Model Model - Gerätetyp |  Dimensioni esterne - External Dimension Dimensions externes - ußenabmessungen | H=67 | | | |
|---|---|--|---|---|---|
|  | Materiale Material Matériau Verstoff | Lunghezza Width Largeur Breite | Profondità Depth Profondeur Tiefe | Altezza Height Hauteur Höhe | Peso Netto Net weight Poids net Netto Gewicht |
| | | mm | mm | mm | kg |
| PPSN0014 | 304 | L=800 | 400 | 670 | |
| PPSN0015 | | L=900 | | | |
| PPSN0016 | | L=1000 | | | |
| PPSN0017 | | L=1100 | | | |
| PPSN0018 | | L=1200 | | | |
| PPSN0019 | | L=1300 | | | |
| PPSN0020 | | L=1400 | | | |
| PPSN0021 | | L=1500 | | | |
| PPSN0022 | | L=1600 | | | |
| PPSN0023 | | L=1700 | | | |
| PPSN0024 | | L=1800 | | | |
| PPSN0025 | | L=1900 | | | |
| PPSN0026 | | L=2000 | | | |
| 1 Ripiano Regolabile - 1 Adjustable Shelf 1 Etagere Reglable - 1 Regelbare Zwischenfläche | | | | | |

Pensili Porte Scorrevoli

Hanging Units with Sliding Doors

Armoires Murales avec portes a Coulissantes

Wandhangeschranke mit Schiebeturen



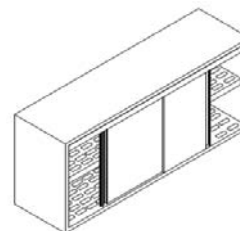
| Modello - Model Model - Gerätetyp | Dimensioni esterne - External Dimension Dimensions externes - ußenabmessungen | | | | H=90 |
|--|---|--|---|---|---|
| | Materiale Material Matériau Verstoff | Lunghezza Width Largeur Breite | Profondità Depth Profondeur Tiefe | Altezza Height Hauteur Höhe | Peso Netto Net weight Poids net Netto Gewicht |
| | | mm | mm | mm | kg |
| PPSN0027 | 304 | L=800 | 400 | 900 | |
| PPSN0028 | | L=900 | | | |
| PPSN0029 | | L=1000 | | | |
| PPSN0030 | | L=1100 | | | |
| PPSN0031 | | L=1200 | | | |
| PPSN0032 | | L=1300 | | | |
| PPSN0033 | | L=1400 | | | |
| PPSN0034 | | L=1500 | | | |
| PPSN0035 | | L=1600 | | | |
| 2 Ripiani Regolabili - 2 Adjustable Shelves 2 Etageres Reglables - 2 Regelbare Zwischenflächen | | | | | |

Pensili con Gocciolatoio

Hanging Units with Draining Board

Armoires Murales avec Egouttoir

Wandhangeschranke mit Abtoffflächen



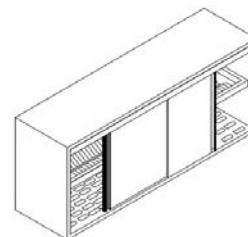
| Modello - Model Model - Gerätetyp |  Dimensioni esterne - External Dimension Dimensions externes - ußenabmessungen | H=67 | | | |
|---|---|--|---|---|---|
|  | Materiale Material Matériau Verkstoff | Lunghezza Width Largeur Breite | Profondità Depth Profondeur Tiefe | Altezza Height Hauteur Höhe | Peso Netto Net weight Poids net Netto Gewicht |
| | | mm | mm | mm | kg |
| PPSG0001 | 304 | L=800 | 400 | 670 | |
| PPSG0002 | | L=1000 | | | |
| PPSG0003 | | L=1200 | | | |
| PPSG0004 | | L=1400 | | | |
| PPSG0005 | | L=1600 | | | |
| PPSG0006 | | L=1800 | | | |
| 2 Gocciolatoi - 2 Draining Boards - 2 Egouttoirs - 2 Abtropfflächen | | | | | |

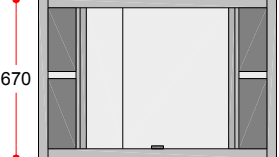
Pensili con Gocciolatoio

Hanging Units with Draining Board

Armoires Murales avec Egouttoir

Wandhangeschranke mit Abtoffflächen



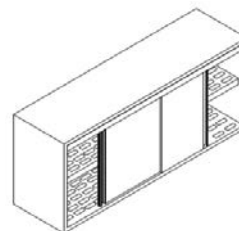
| Modello - Model Model - Gerätetyp | Dimensioni esterne - External Dimension Dimensions externes - ußenabmessungen | | | | H=67 |
|---|---|--|---|---|---|
|  | Materiale Material Matériau Verkstoff | Lunghezza Width Largeur Breite | Profondità Depth Profondeur Tiefe | Altezza Height Hauteur Höhe | Peso Netto Net weight Poids net Netto Gewicht |
| | | mm | mm | mm | kg |
| PPSS0001 | 304 | L=800 | 400 | 670 | |
| PPSS0002 | | L=1000 | | | |
| PPSS0003 | | L=1200 | | | |
| PPSS0004 | | L=1400 | | | |
| PPSS0005 | | L=1600 | | | |
| PPSS0006 | | L=1800 | | | |
| 1 Gocciolatoio + 1 Scolapiatti - 1 Draining Board + 1 Plate-Racks 1 Egouttoir + 1 Egouttoir Avec Pour Plattes 1 Abtropfflächen + 1 Mit Teller Abtropfflächen | | | | | |


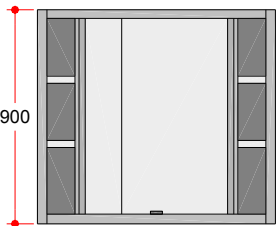
Pensili con Gocciolatoio

Hanging Units with Draining Board

Armoires Murales avec Egouttoir

Wandhangeschranke mit Abtoffflächen



| Modello - Model Model - Gerätetyp |  Dimensioni esterne - External Dimension Dimensions externes - ußenabmessungen | H=90 | | | |
|---|---|--|---|---|---|
|  | Materiale Material Matériau Verstoff | Lunghezza Width Largeur Breite | Profondità Depth Profondeur Tiefe | Altezza Height Hauteur Höhe | Peso Netto Net weight Poids net Netto Gewicht |
| | | mm | mm | mm | kg |
| PPSG0007 | 304 | L=800 | 400 | 900 | |
| PPSG0008 | | L=1000 | | | |
| PPSG0009 | | L=1200 | | | |
| PPSG0010 | | L=1400 | | | |
| PPSG0011 | | L=1600 | | | |
| 3 Gocciolatoi - 3 Draining Boards - 3 Egouttoirs - 3 Abtropfflächen | | | | | |